



## **Big Horn Tile - WPC**

### **Installation, Warranty, and Care & Maintenance Instructions**

This product's locking installation system allows the planks to be installed without using adhesives. It is a floating floor installation. Do not install fixed objects, such as cabinets, on top of the flooring or fasten trim/molding/transition pieces directly to the floor. The planks should be installed 5/16" away from all vertical surfaces such as walls, cabinets, pipes, etc.

#### **Product Inspection**

- Inspection of all flooring material must be done prior to the installation.
- Materials with visible defects are not covered under warranties once they are installed.
- WPC is manufactured in accordance with accepted industry standards, which permit a defect tolerance not to exceed 2%.

#### **Sub-Floor Preparation**

- Sub-floor must be flat, dry, smooth, level, free from residues and structurally sound.
- The subfloor must be level to within 3/16" in 10' or 1/8" in 6'.
- For concrete substrates, conduct moisture testing. Moisture Vapor Emission Rate (MVER) cannot exceed 5lbs and/or Relative Humidity cannot exceed 90% (in-situ probe).
- Irregularities in concrete, embossed existing resilient floors, ceramic tile floors, ceramic and marble grout joints, should be filled and leveled using a cementitious based patch.
- If installing over existing resilient flooring, the existing flooring must be clean, dry, and fully adhered to the subfloor. WPC products should not be installed over existing cushion back sheet vinyl, or products with an existing cushioned underlayment. You cannot install over two existing layers of resilient flooring.

#### **Site Conditions**

- The area to receive WPC should be acclimated between 65°F (18°C) and 85°F (29°C) for 48 hours before installation, during installation, and 48 hours after completion. Maintain temperatures between 55°F (13°C) and 85°F (29°C) for the life of the product thereafter.
- WPC can be installed over Hydronic Radiant Floors, but the subfloor surface temperature cannot not exceed a maximum of 85°F (29°C).
- Remove baseboard, quarter-round moldings, wall base, appliances and furniture from room.
- After preparation work, sweep and vacuum the entire work area to remove all dust and debris.

#### **Installation Guidelines**

- WPC must be installed indoors.
- Door trim should be under-cut to allow flooring to move freely without being pinched.

- Whenever possible, plan the layout so that the joints in the planks do not fall on top of joints or seams in.
- Wooden subfloor joists should be spaced no wider than 16" on center.
- The end joints of the planks should be staggered a minimum of 6" apart.
- Additional underlayment may not be installed under products that already have attached cushions.
- Runs exceeding 45ft in length or 25ft in width require an expansion gap. A T-Mold Transition strip can be used to cover the expansion gap.
- Avoid exposure to long periods of direct sunlight. Use blinds, curtains, or shades to assure that the product is not overheated due to direct sunlight exposure.

## Standard installation - Angle-Angle

### E. Installation method of floor panels

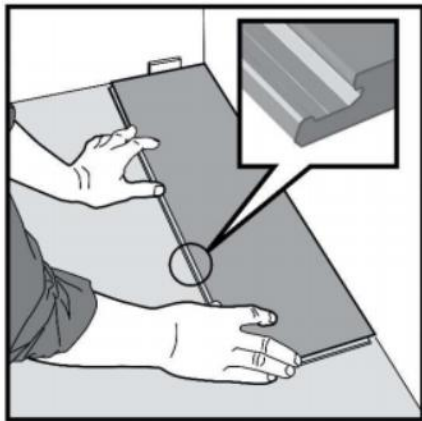


Fig 1.  
First plank, first row.

Place a distance 8 mm thickness to the left and position the plank against the wall.

Later, after 3 rows, you can easily position the flooring against the front wall with distances 8 mm.

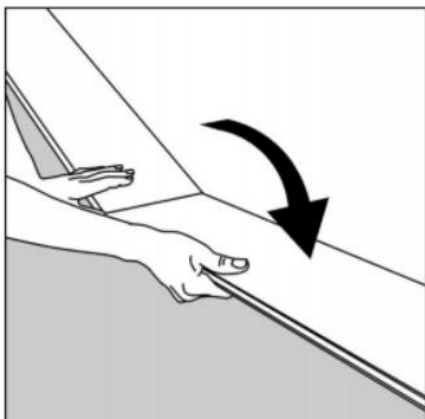


Fig 2.  
Second plank, first row

Press the short end of the next floorboard at an angle to the first one, and then lay down.

Complete the first row in the same way.

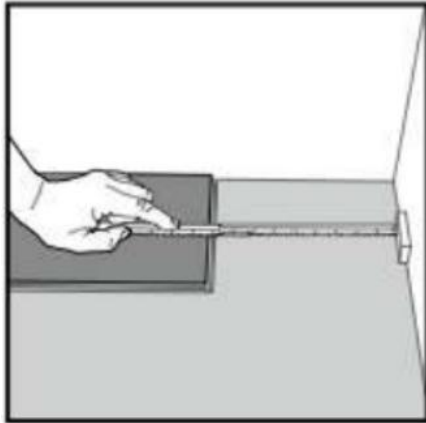


Fig 3.

At the end of the first row, put a distance 8 mm, to the wall and measure the length of the last plank to fit.

Cut the last panel to correct length, recommended min length is two times the width of the plank.

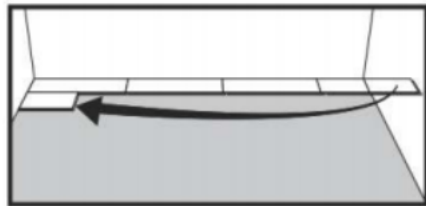


Fig 4.

Second row. Position the remaining part of the first row's last plank as first plank of second row. Keep again two times the width as min length.

Put a distance against the wall.

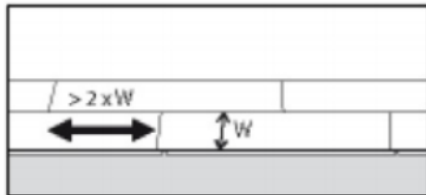


Fig 5.

General. Distances between short ends.

Minimum distance between short ends of planks in parallel rows shall not be less than about two times the width of the plank.



Fig 6.

Place the floorboard an angle against the floorboard in the previous row, press forward and fold down at the same time.

Leave the panel in a somewhat up angled position where the panels start to loc. To make this further easier, a wedge with the suitable angle can be placed under the plank near the short side joint as support.



Fig 7.  
Second plank second row.

Place the short end of the floorboard at an angle against the previous installed floorboard and fold down all the way.

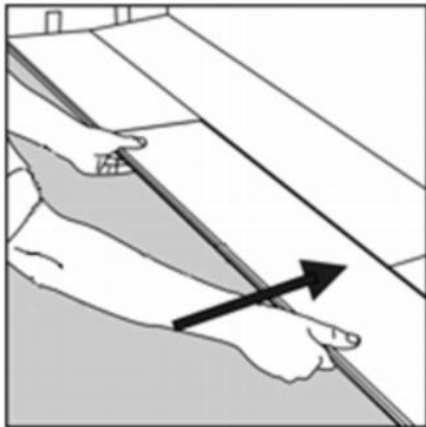


Fig 8.  
Push to slide the plank against the row in front so it aligns with the first plank. Put it down like with the first plank when the floorboards are positioned tightly together.

The first/previous plank can now be folded completely down to horizontal position and if a wedge is used it can be moved to the next short end joint.

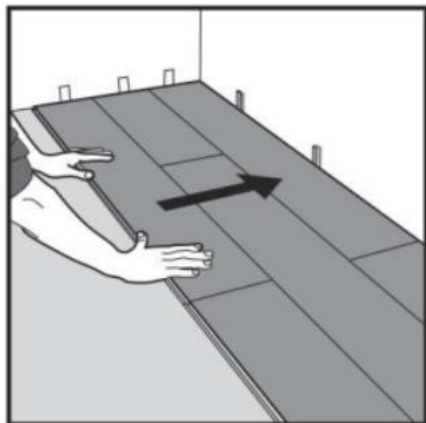


Fig 9.  
After 2-3 rows.

Adjust the distance to the front wall by placing distances 8 mm. Keep the distances in position during the entire time of installation and remove once the installation is completed.

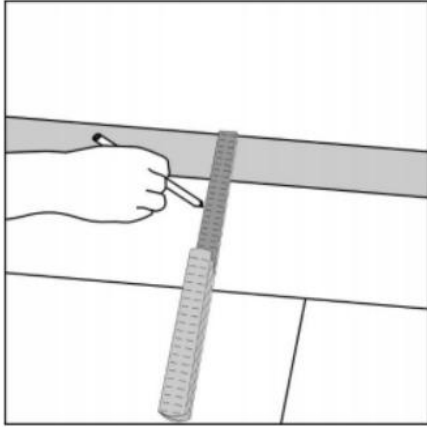


Fig 10.

If the wall is uneven, the floorboards must be adapted to its contours. Mark the floorboards with the contour of the wall. Do not forget to leave a 8 mm space to the wall.

This procedure shall be used also for the first row if necessary.

### Horizontal installation



Fig 11.

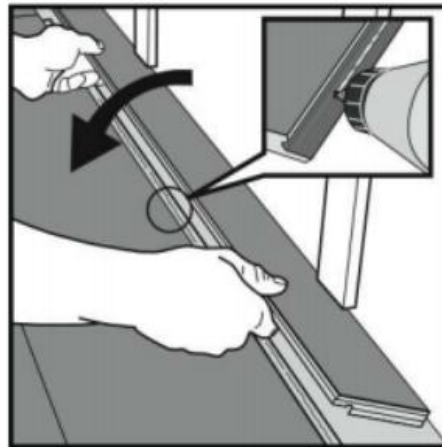


Fig 12.

Cut off the locking element with a chisel, apply applicable glue on the adjusted strip and push the planks horizontally together. If necessary, place some spacers between the last board and the wall during the hardening time of the glue. The method can also be applied to the short ends.

## Radiator pipes – Principle cut out

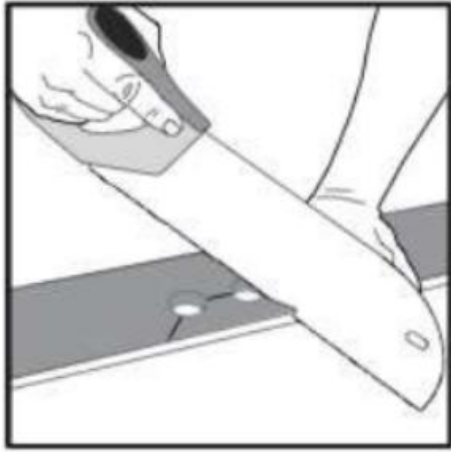


Fig 13.



Fig 14.

Installation at, for example, radiator pipes. Mark the center of the holes and drill the hole with a diameter about 16 mm bigger than the pipe diameter (= 8 mm gap around), cut as shown with a saw or with a sharp utility knife. Install the floor plank. If necessary, put glue on the cut piece and replace.

## LIMITED RESIDENTIAL WARRANTY

Big Horn Tile is backed by a Limited Residential Warranty for manufacturing defects as described below.

Big Horn Tile flooring is guaranteed to be free from manufacturing defects, delamination, and loss of original pattern due to the wear layer wearing through to expose the core material over a minimum of 3% of the installation. Gloss reduction or surface scratches are not considered surface wear. This warranty is in effect when the floor is subject to normal residential use provided the flooring covered by this warranty was installed and maintained according to Midwest Floor Source's published instructions.

If a manufacturing defect is found in your floor, upon verification of the defect, Midwest Floor Source will arrange a pro-rated credit based on the terms outlined in the "Terms & Conditions" section below. If your floor was installed by a professional flooring installer/contractor pursuant to Midwest Floor Source installation instructions, Midwest Floor Source will also pay reasonable professional labor costs to repair your floor or install your replacement floor if the defect is reported within the first year of the original purchase, and 50% if the defect is reported within the second year from the original purchase. Labor costs will not be reimbursed if the defect is reported more than two years after the original purchase

## **LIMITED LIGHT COMMERCIAL WARRANTY**

Big Horn Tile is backed by a Limited Light Commercial Warranty for manufacturing defects as described below.

Big Horn Tile flooring is guaranteed to be free from manufacturing defects, delamination, and loss of original pattern due to the wear layer wearing through to expose the core material over a minimum of 3% of the installation. Gloss reduction or surface scratches are not considered surface wear. This warranty is in effect when the floor is subject to normal light commercial use (as listed below) provided the flooring covered by this warranty was installed and maintained according to Midwest Floor Source's published instructions.

If a manufacturing defect is found in your floor, upon verification of the defect, Midwest Floor Source will arrange a pro-rated credit based on the terms outlined in the "Terms & Conditions" section below. If your floor was installed by a professional flooring installer/contractor pursuant to Midwest Floor Source's installation instructions, Midwest Floor Source will also pay reasonable professional labor costs to repair your floor or install your replacement floor if the defect is reported within the first year of the original purchase, and 50% if the defect is reported within the second year from the original purchase. Labor costs will not be reimbursed if the defect is reported more than two years after the original purchase.

Light Commercial is defined as: Inside condominiums, apartments, & hotel rooms. Small retail shops and waiting rooms are also considered Light Commercial areas.

Areas not covered by the Limited Light Commercial Warranty include, but are not limited to: Condo, Hotel, or apartment common areas, large retail stores, areas subject to frequent rolling loads, large commercial applications (education/institutional, hospital/healthcare, large retail, commercial office space), assisted living facilities, anywhere commercial cleaning machines will be used. Please contact Midwest Floor Source for any clarification needed with regards to areas covered by the Light Commercial Warranty.

## **WHAT DOES WATERPROOF MEAN?**

When exposed to water, Midwest Floor Source Rigid Vinyl Planks will not swell, buckle, or lose structural integrity due to moisture from recommended maintenance or moisture from everyday household spills. All sources of subfloor moisture should be removed or remediated prior to installation. In the case of standing water, Midwest Floor Source Rigid Vinyl planks will not act as a waterproofing barrier for the subfloor and/or any surrounding structure. This warranty covers topical moisture as long as the water does not flow over the edge of the surface. Any damage to the subfloor and/or surrounding structure that is caused by standing water is not covered by this warranty. Midwest Floors Source Glue Down Luxury Vinyl Plank and Free Lay Luxury Vinyl Plank are not covered under the Waterproof portion of this warranty.

## LIMITED WARRANTY TERMS & CONDITIONS

The length of each warranty is determined by the product's wear layer thickness.

<b>Wear Layer Thickness</b>	<b>Residential</b>	<b>Light Commercial</b>
<b>20 mil</b>	<b>30 Years</b>	<b>10 Years</b>

### Schedule of Proration

<b>Residential</b>	<b>Light Commercial</b>	
<b>Date Reported from Original Purchase</b>	<b>Percentage of Material Purchase Credit</b>	<b>Percentage of Material Purchase Credit</b>
<b>1st Year</b>	<b>100%</b>	<b>100%</b>
<b>2nd Year</b>	<b>100%</b>	<b>90%</b>
<b>3rd Year</b>	<b>100%</b>	<b>80%</b>
<b>4th Year</b>	<b>90%</b>	<b>60%</b>
<b>5th Year</b>	<b>70%</b>	<b>40%</b>
<b>6th Year</b>	<b>50%</b>	<b>20%</b>
<b>7th Year</b>	<b>30%</b>	<b>10%</b>
<b>8th Year</b>	<b>20%</b>	<b>10%</b>
<b>9th Year</b>	<b>10%</b>	<b>10%</b>
<b>10+ years</b>	<b>10%</b>	<b>10%</b>

## EXCEPTIONS AND LIMITATIONS

1. All warranties apply from the date of purchase and only to the original owner of the floor.
2. Wear from chairs or other furniture without proper floor protectors is not covered.
3. Indentations, scratches or surface damage caused by improper maintenance, misuse, negligence, spike heeled shoes, pebbles, sand, or other abrasives are not covered by this warranty.
4. Sub-floor irregularities can cause premature wear on the wear layer and will void the warranty.
5. Dissatisfaction or damage due to improper installation or installation contrary to Midwest Floor Source's recommendations will void the warranty. Installation instructions are included in each carton of material and are available online at [www.midwestfloorsource.com](http://www.midwestfloorsource.com).
6. Labor on material installed with obvious defects is not covered by these warranties.
7. Labor costs on repair or replacement of material which was not originally professionally installed are not covered by this warranty.
8. Problems due to moisture, mildew, alkaline substances, or hydrostatic pressure in the sub-floor are not covered by this warranty, except as outlined in the Waterproof section of this document.



9. Using non-recommended floor care products may damage the floor and void the warranty.
10. Purchase of “closeouts”, “seconds”, “remnants”, “mill trials” or other “irregular” (non-first quality) flooring material, or material not part of, or available in the regular Midwest Floor Source’s product line are not warranted.
11. Warranty will be voided if product is removed from the site of original installation.
12. Residential Warranty applies only to owner occupied spaces. The Light Commercial Warranty applies to residential rental properties, as well as the spaces described in the Light Commercial Wear Warranty section.
13. Warranties are voided if product is installed outdoors, or in a non-climate controlled space.
14. Exposure to long periods of direct sunlight can lead to thermal expansion, causing the planks to expand and curl. This is not a covered item under these warranties, and Midwest Floor Source strongly recommends the use of blinds, curtains, or window treatments to prevent long term exposure to direct sunlight.
15. Rolling Chairs require the use of chair pads.

*Note:* If Big Horn Tile fails to perform as stated in the applicable Limited Warranty, Midwest Floor Source will, at its option: (i) repair without charge the affected flooring to conform to the warranty; or (ii) replace the affected flooring without charge, with flooring of equal value and/ or quality. Midwest Floor Source will also pay for reasonable labor costs per the conditions stated above. Midwest Floor Source will not pay for the removal or replacement of cabinets, appliances, or other fixtures. Replacement floors are warranted only for the remaining time of the original warranty and are not warranted to match samples or marketing materials (ie. photographs, website, etc.) or match in color, production lot, and gloss with your existing floor.

THESE ARE YOUR EXCLUSIVE REMEDIES UNDER THE LIMITED WARRANTIES SET FORTH ABOVE. UNDER THE TERMS OF THESE LIMITED WARRANTIES, MIDWEST FLOOR SOURCE WILL NOT BE LIABLE FOR INDIRECT, SPECIAL, INCIDENTAL, CONSEQUENTIAL OR OTHER DAMAGES OF ANY KIND, NO MATTER WHAT THE CAUSE. THERE ARE NO IMPLIED WARRANTIES, INCLUDING THE IMPLIED WARRANTIES OR MERCHANTABILITY AND FITNESS FOR A PARTICULAR PURPOSE, EXTENDING BEYOND THE TERMS OF THESE LIMITED WARRANTIES. EXCEPT AS SET FORTH HEREIN, THERE ARE NOT EXPRESS WARRANTIES MADE BY MIDWEST FLOOR SOURCE.

## CARE & MAINTENANCE

Midwest Floor Source stands behind the quality and craftsmanship of every product we sell. You have selected a Rigid Vinyl Plank known for style, quality, and value that we know you will enjoy for years to come. This document should help you understand how to properly maintain your new floor.

### Routine Floor Care

- Sweep the floor with a soft bristled broom to remove loose dirt.
- Damp mop with well wrung mop. (Daily or as needed)
- Use of Steam Mops may damage the floor and will void the warranty.
- Spills should be cleaned up immediately.
- If a deeper cleaning is desired, clean the floor using a properly diluted pH Neutral cleaner designed for vinyl flooring such as: Armstrong Once n' Done, Rejuvenate Luxury Vinyl Floor Cleaner, or Bona Pro Series Luxury Vinyl Floor Cleaner. Follow label instructions.

### Prevention

- The single greatest cause of damage to any flooring or floor finish is abrasion from dirt and grit. Wherever possible, use walk off mats at entrances and doorways.
- Use non-staining floor protectors under heavy furniture, chairs, and tables.
- Routinely clean or change protectors on chairs and furniture.
- Make sure to avoid rubber back rugs and mats. These can trap moisture and lead to discoloration of the flooring.
- Always use plywood or other boards when moving heavy objects across the floor.
- Never push, pull, or drag furniture, appliances, or heavy objects across the floor.
- Avoid exposing this Rigid Vinyl Plank to direct sunlight for prolonged periods of time. Exposing Rigid Vinyl Planks to direct sunlight may lead to discoloration or thermal expansion (which will lead to peaking planks). During peak sunlight hours, the use of drapes or blinds is recommended.
- Do not use harsh abrasive cleaners, bleach, ammonia, or citrus based cleaners, wax or acrylic polishes, or oil soaps. These may dull or damage the finish, leaving a greasy film and making the floor slippery and more difficult to clean.
- Chair pads must be used under rolling chairs.